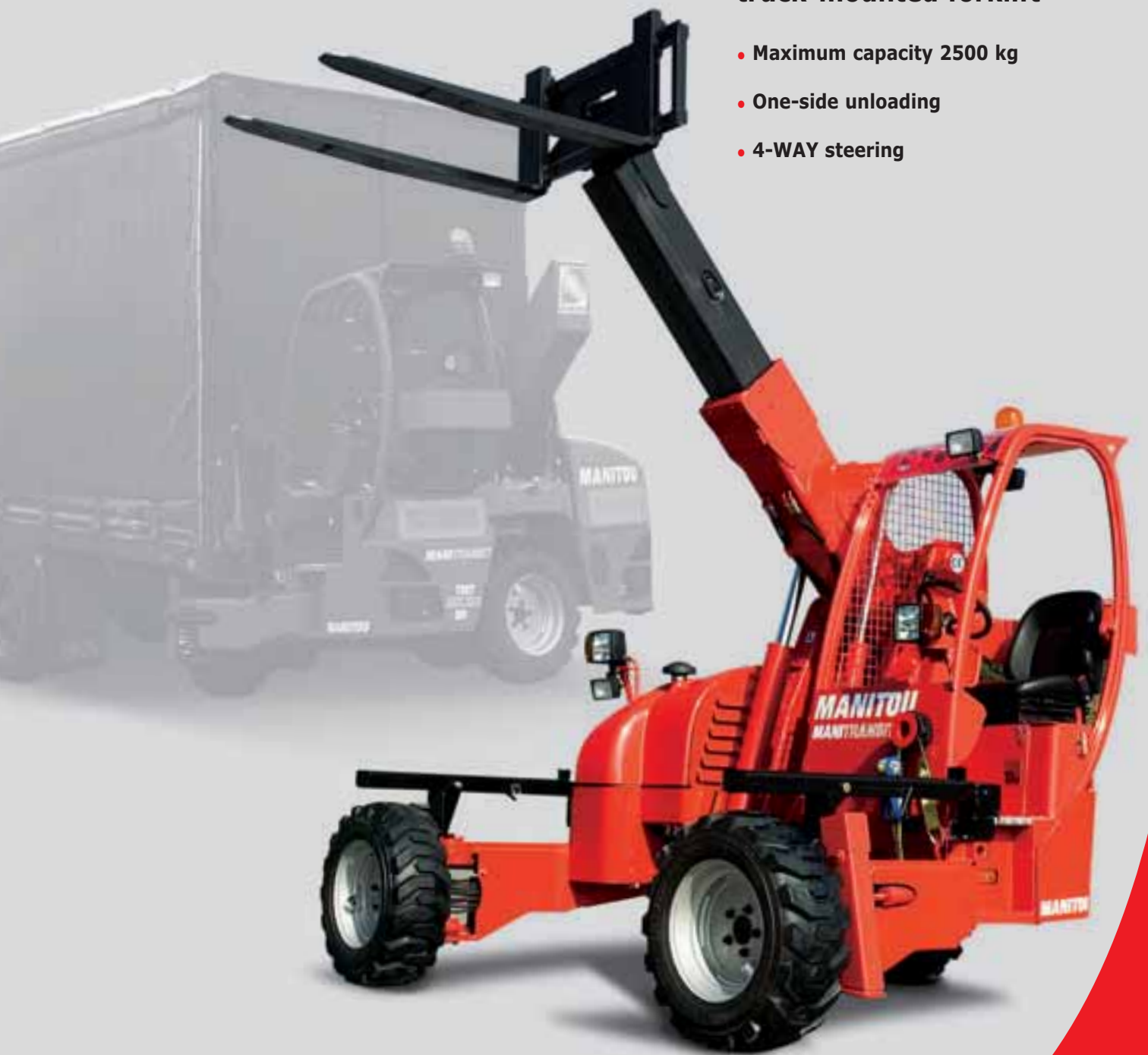


# MANITRANSIT **TMT 2520 SR** **4W**

## Rough terrain telescopic truck-mounted forklift

- Maximum capacity 2500 kg
- One-side unloading
- 4-WAY steering



## TMT 2520 SR 4W



### CAPACITY

Maximum capacity .....2500 kg



### LIFTING

Maximum lifting height .....3400 mm

Maximum front reach .....1350 mm

Side-shift.....135 mm



### ENGINE / TRANSMISSION

Type .....PERKINS (50 HP)

Hydrostatic transmission

Driving wheels .....3



### TYRES

Front tyres.....10 x 16,5 10PR

Rear tyre .....10 x 16,5 10PR



### DIMENSIONS

Width .....2500 mm

Height .....2212 mm

Overhang (in transport position) .....1440 mm

Weight (without equipment) .....2615 kg

### STANDARD

ROPS/FOPS Cab + load indicator

FNR joystick

Waterproof dashboard and electric connections

Stabilisers

Differential lock

4-WAY steering

Anticorrosion treatment by cathaphoresis

### OPTIONS

Full mounting kit (+ load repartition calculation)

Rearview mirrors

Rotating beacon

Road lights

Working lights and reversing light

Load backrest

### FNR JOYSTICK



This new « boom control » joystick now integrates the « reversing shift » function : the driver can keep one hand on the steering wheel and one hand on this joystick to operate any movement. Time saving and much better driving position.



The specifications contained herein shall not bind the manufacturer and are subject to change without notice.  
The Manitou described in this brochure may include optional equipment.  
Patented design

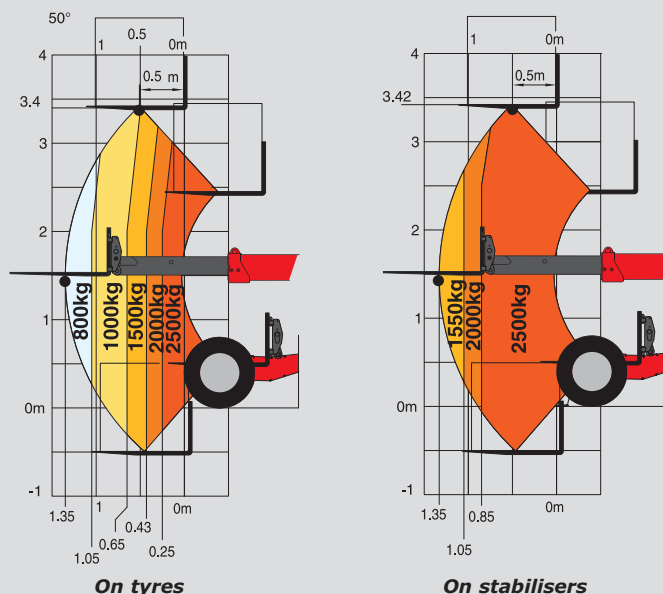
### MANITOU BF SA

B.P. 249 - 44158 Ancenis Cedex - France

Tel. : 33 2 40 09 10 11 / Export Department Fax : 33 2 40 09 10 97

www.manitou.com

700407EN-A - 11/07



### LONG BOOM



Easy and economical to maintain, the telescopic boom lets you unload your platform on one side only with excellent visibility, without needing extra accessories.

### POWER



With its Perkins 50 HP engine, the TMT 2520 SR 4W provides all the power needed by the 3 drive wheels to be perfectly at ease on the most difficult terrain and to cope with obstacles. You will save time and work under conditions of maximum operating comfort.



# MANITOU